



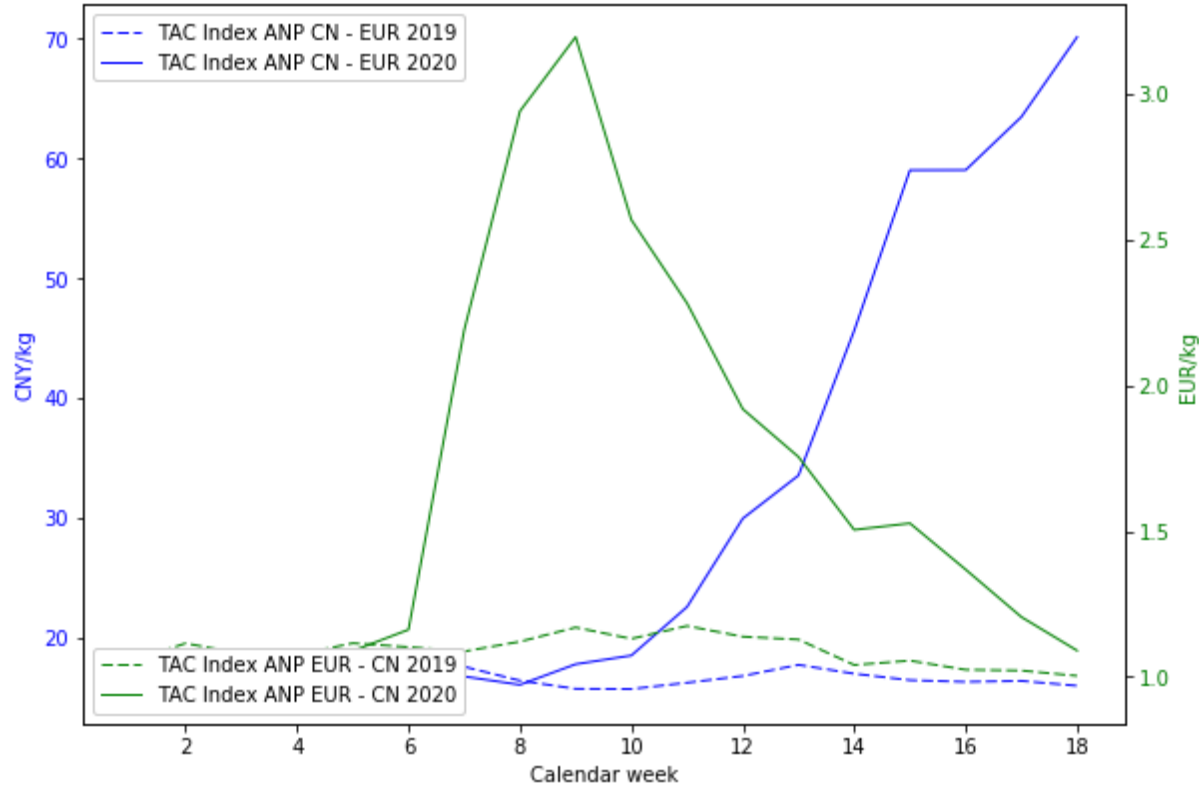
# AIR FREIGHT LATEST ANP PRICING DEVELOPMENT

to/from CHINA, US & HONG KONG

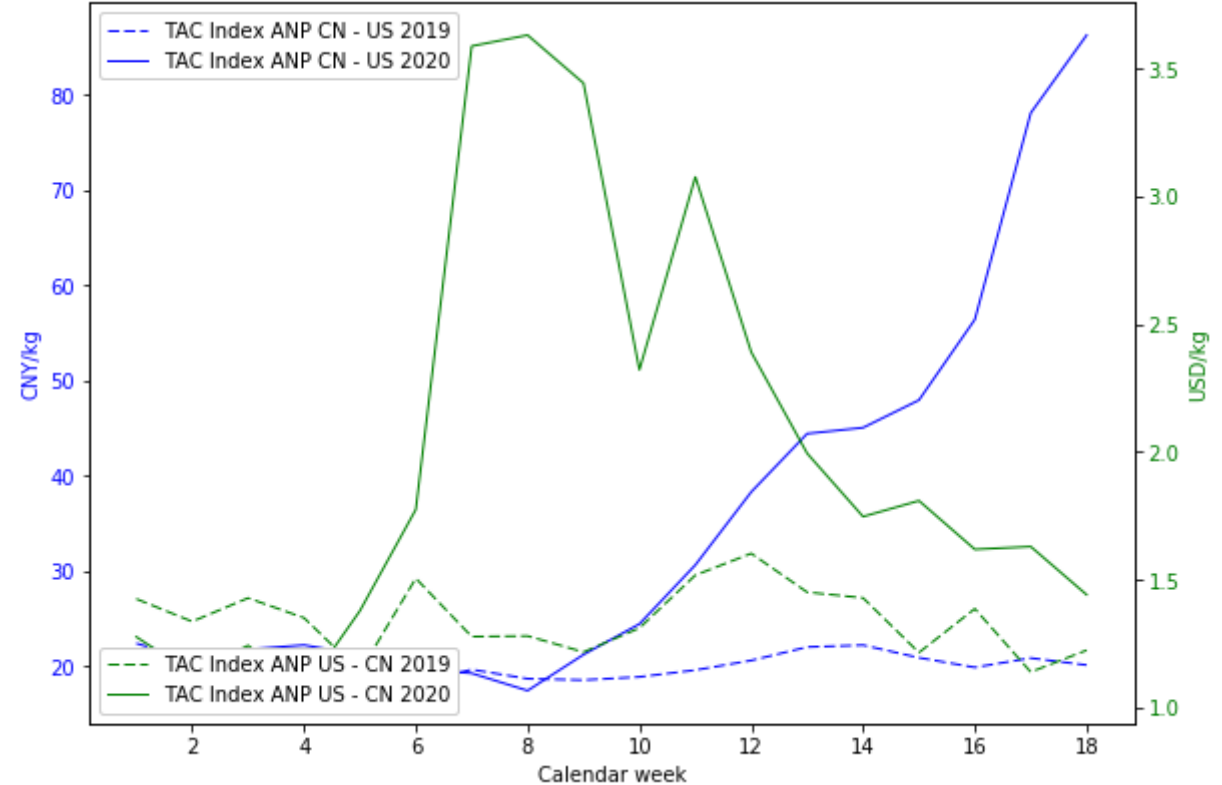
Update: 4 May 2020

# PRICING DEVELOPMENTS TO/FROM CHINA

## CHINA TO EUROPE COMPARISON YOY



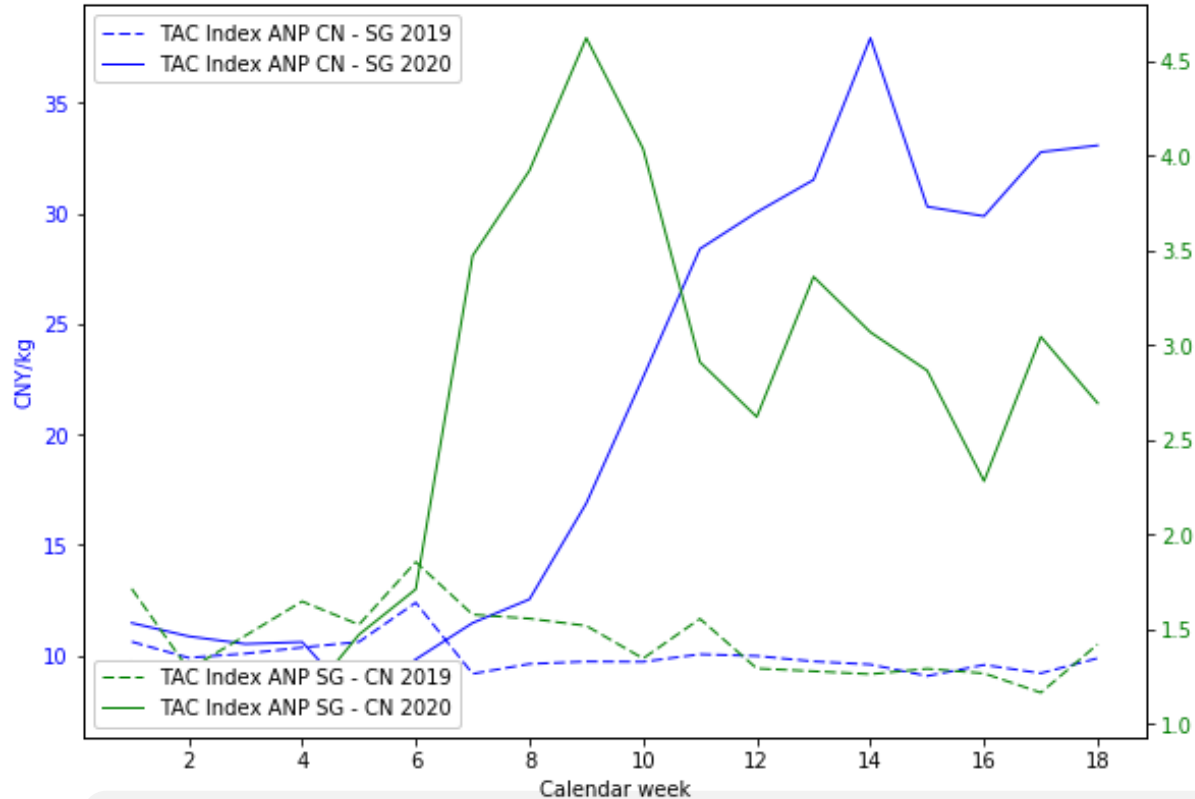
## CHINA TO US DEVELOPMENT YOY



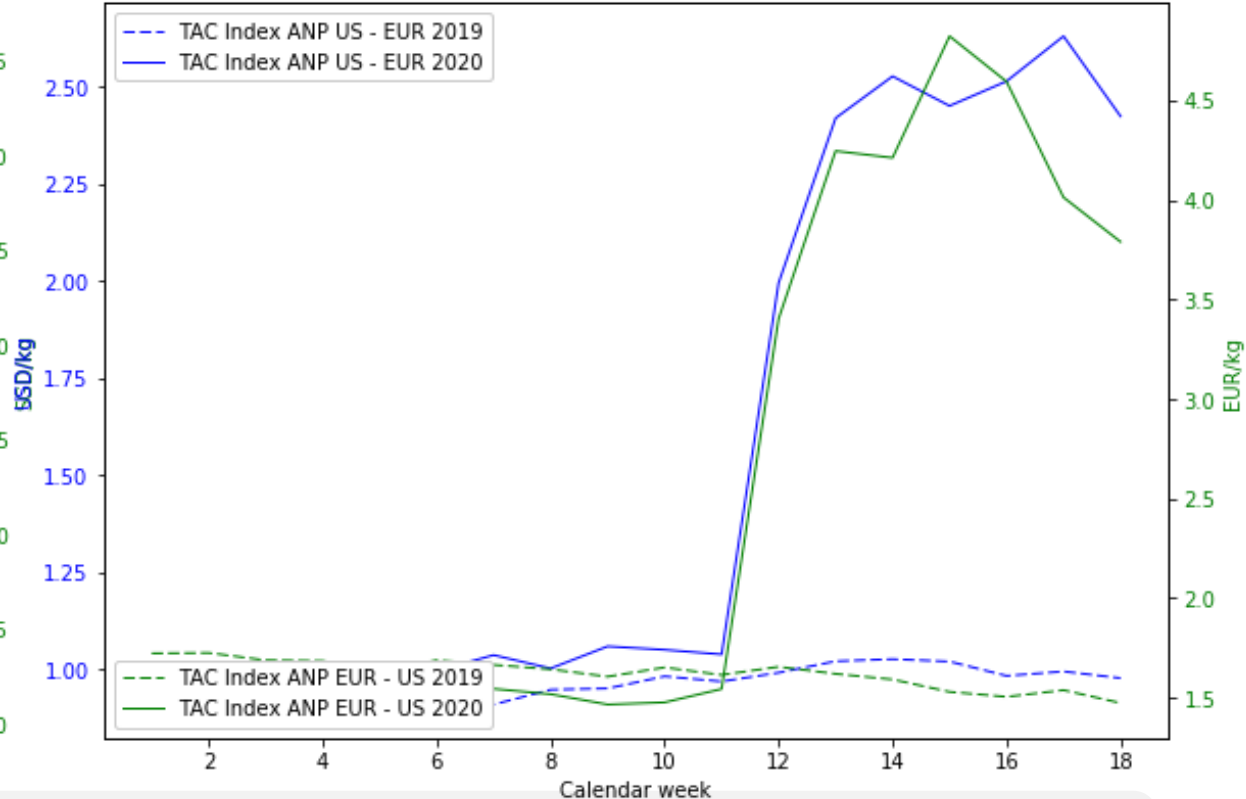
Note: The week indication is based on publishing date and refers to pricing of the previous week.

# PRICING DEVELOPMENTS FROM CHINA & USA

## CHINA TO SINGAPORE COMPARISON YOY



## USA TO EUROPE DEVELOPMENT YOY

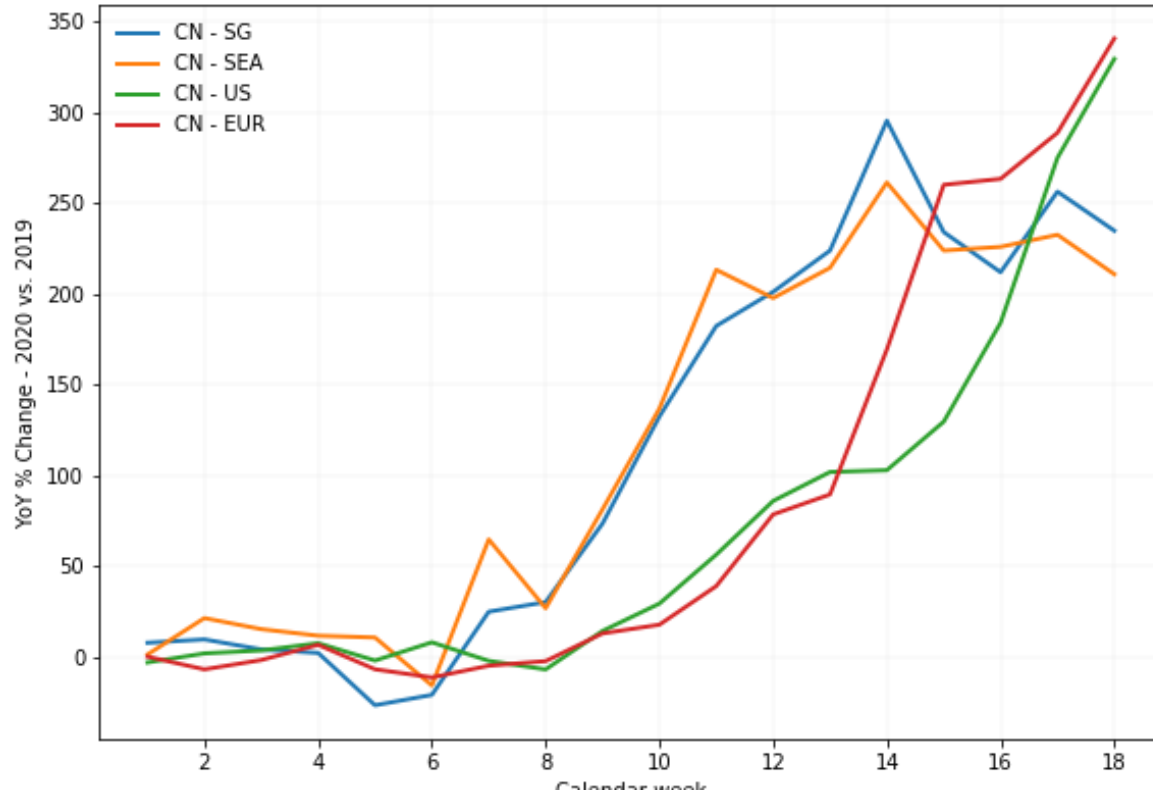


Note: The week indication is based on publishing date and refers to pricing of the previous week.  
The Actual Net Pricing (ANP) is the per KG rate achieved using all-in cost and actual weight declared on the MAWB.

# PRICING DEVELOPMENTS INBOUND-OUTBOUND CHINA **TAC**Index

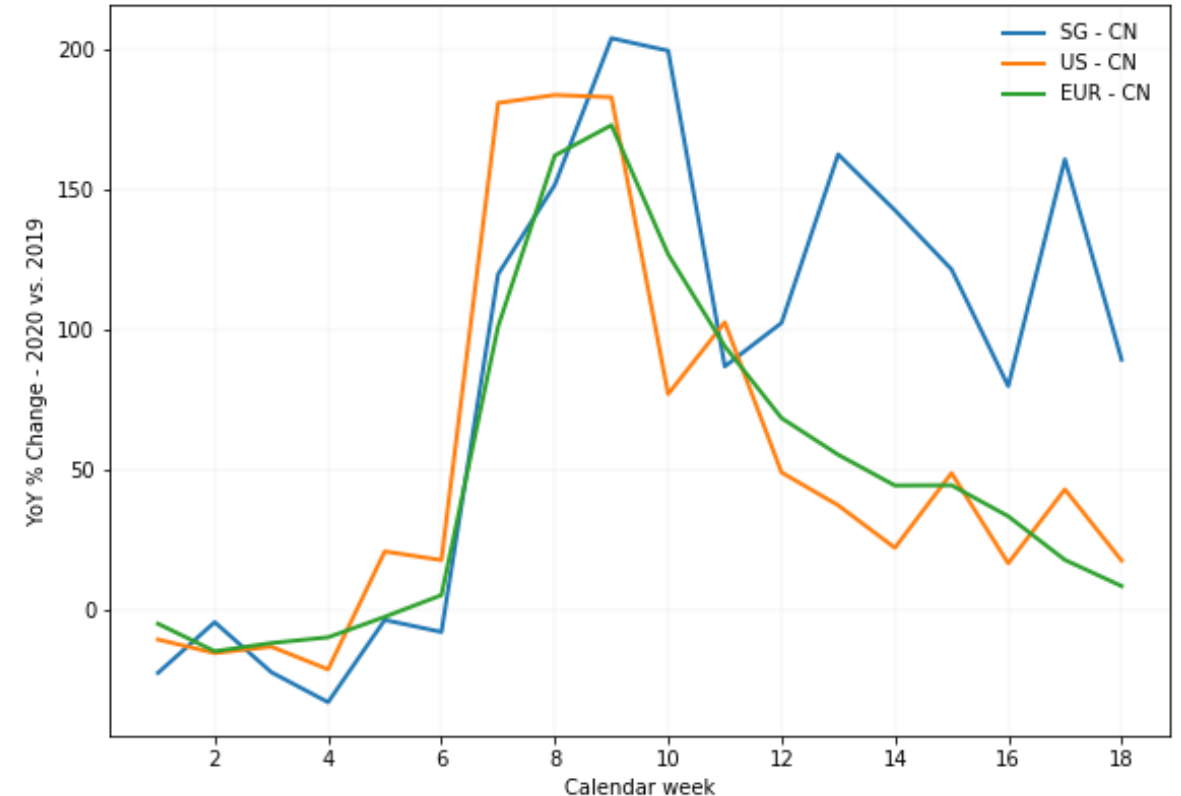
## CHINA OUTBOUND COMPARISON YOY

TAC Index ANP YoY Change



## CHINA INBOUND COMPARISON YOY

TAC Index ANP YoY Change



# PRICING DEVELOPMENTS HONG KONG OUTBOUND

## HONG KONG OUTBOUND COMPARISON YOY

