

Spor G: mTIME - Datavarehus

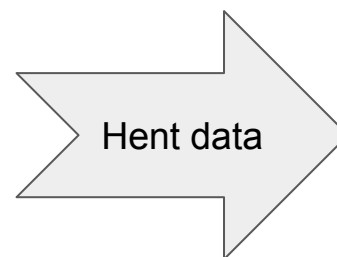
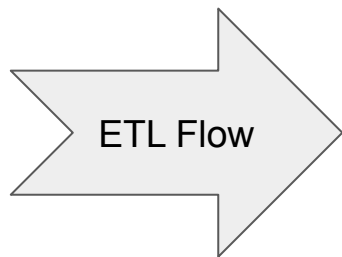
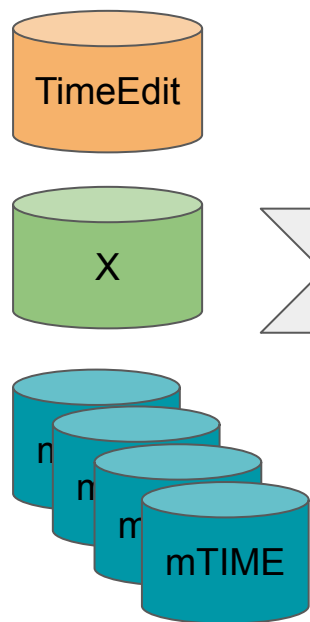
28. september 2022

 **VISMA** | timemsystem

Agenda

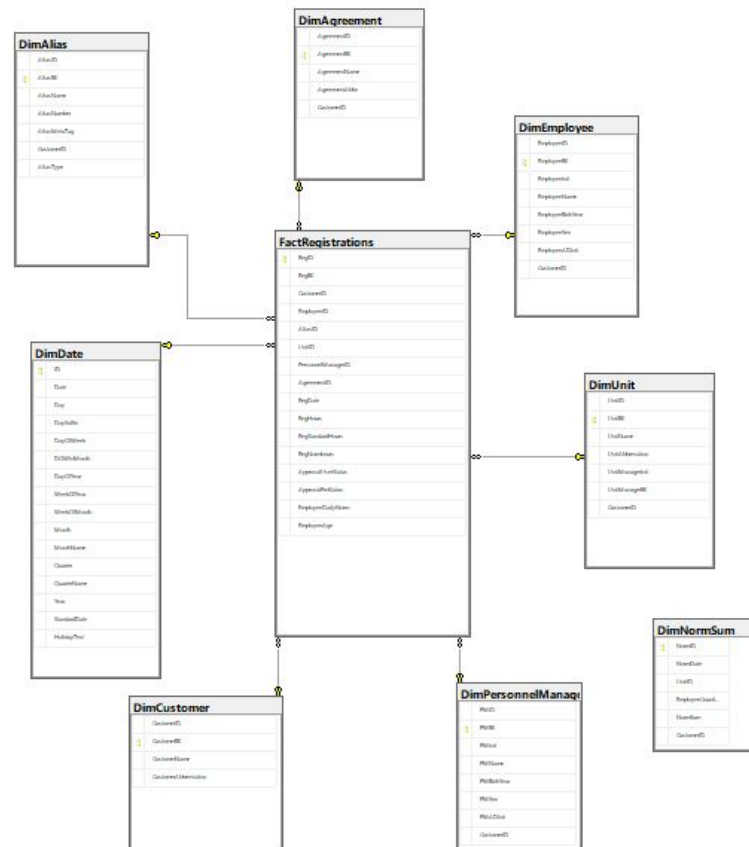
- Teknikken bag
- Strukturering af data
- Bagudkompatibilitet
- Eksempel på rapporter
- Roadmap

Teknikken bag



Strukturering af data

- Stjerneschemaer
- Relationer mellem FACT og DIM
- Daglig synkronisering af data
- Opdeling i følgende FACT
 - FactRegistrations
 - FactPeriode
 - FactEmployee
 - FactBalance
 - FactBudgetLine
 - FactTransaction
 - FactSchedulingPiece



Bagudkompatibilitet

De mest brugte LIS views er gjort tilgængelige via datavarehuset.

- LIS_VW_Bruger
- LIS_VW_Registreringer
- LIS_VW_BrugerSaldi



2 | SELECT * FROM [dbo].[LIS_VW_Bruger]

id	BrugerInt	Fomavn	Eftnavn	ErhedeId	Loennummer	slettet	CPFnummer	ansættelsesdato	HarToejPoint	
1	1169	01CHL	01CHL	01CHL	1	Intet 0000	2019-11-19 00:00:00.000	0000	2019-09-02 00:00:00.000	NULL
2	1200	ABC	ABC	ABC	1		2021-11-30 00:00:00.000		2021-11-01 00:00:00.000	NULL
3	1188	AKP	AKP	AKP	1	Intet 0000	NULL	2020-11-01 00:00:00.000	NULL	NULL
4	1125	ALK	ALK	ALK	1	0101010000	2017-07-01 00:00:00.000	0101010000	2014-04-14 00:00:00.000	NULL
5	1046	ALP	ALP	ALP	NULL	0101010000	NULL	2011730000	2011-12-05 00:00:00.000	NULL
6	1151	AND	AND	AND	1	0101010000	2018-12-31 00:00:00.000	0101010000	2018-01-01 00:00:00.000	NULL
7	11	APL	APL	APL	1	0101010000	2013-07-01 00:00:00.000	0101010000	2006-10-23 00:00:00.000	NULL
8	1199	ATX	ATS	ATS	6	Intet 0000	NULL	1212710000	2021-10-01 00:00:00.000	NULL
9	1122	BAL	BAL	BAL	NULL	0101010000	2018-12-31 00:00:00.000	0101010000	2016-08-01 00:00:00.000	NULL
10	1120	BQP	BBX	BBX	NULL	0101010000	NULL	0101010000	2016-06-08 00:00:00.000	NULL
11	1053	bit								
12	1087	BWA								
13	1052	CAD								
14	1185	CAP								
15	1155	CHB								
16	1184	CHL								

2 | SELECT * FROM [dbo].[LIS_VW_BrugerSaldi]

100 %

BrugerInt	BrugerNavn	BrugerCPR	EmneNavn	Antal	Erhede	
1	01CHL	01CHL	0000	mTIMEfridage	11.10	Timer
2	ALP	ALP	2011730000	mTIMEfridage	37.00	Timer
3	ALP	ALP	2011730000	mTIMEfridage	37.00	Timer
4	ALP	ALP	2011730000	mTIMEfridage	37.00	Timer
5	ALP	ALP	2011730000	mTIMEfridage	37.00	Timer

2 | SELECT * FROM [dbo].[LIS_VW_Registreringer]

100 %

Id	Initialer	EmneNr	AktivitetNr	OverAtbPaaEmne	Dato	Ar	Måned	Kommer
1	196449	ALK	10014	02	2016-11-07 00:00:00.000	2016	11	
2	196450	ALK	10014	02	2016-11-08 00:00:00.000	2016	11	
3	199103	ALK	10902_1		2016-12-12 00:00:00.000	2016	12	NULL
4	199086	ALK	10014	02	2016-12-13 00:00:00.000	2016	12	NULL
5	199087	ALK	10014		2016-12-14 00:00:00.000	2016	12	NULL
6	199088	ALK	10014		2016-12-15 00:00:00.000	2016	12	NULL
7	199089	ALK	10014	02	2016-12-15 00:00:00.000	2016	12	NULL
8	199102	ALK	10902_1		2016-12-18 00:00:00.000	2016	12	NULL
9	190659	ALP	99003		2016-08-15 00:00:00.000	2016	8	NULL
10	195335	alp	99998		2016-10-05 00:00:00.000	2016	10	NULL
11	195337	alp	99998		2016-10-12 00:00:00.000	2016	10	NULL
12	195367	ALP	99998		2016-10-19 00:00:00.000	2016	10	NULL
13	195528	ALP	99994		2016-10-21 00:00:00.000	2016	10	NULL
14	31771	ALP	10901		2011-12-08 00:00:00.000	2011	12	NULL
15	31771	ALP	10901		2011-12-08 00:00:00.000	2011	12	NULL
16	34219	ALP	10901		2011-12-12 00:00:00.000	2011	12	NULL
17	34219	ALP	10901		2011-12-12 00:00:00.000	2011	12	NULL
18	34312	ALP	10901		2011-12-14 00:00:00.000	2011	12	NULL
19	34312	ALP	10901		2011-12-14 00:00:00.000	2011	12	NULL

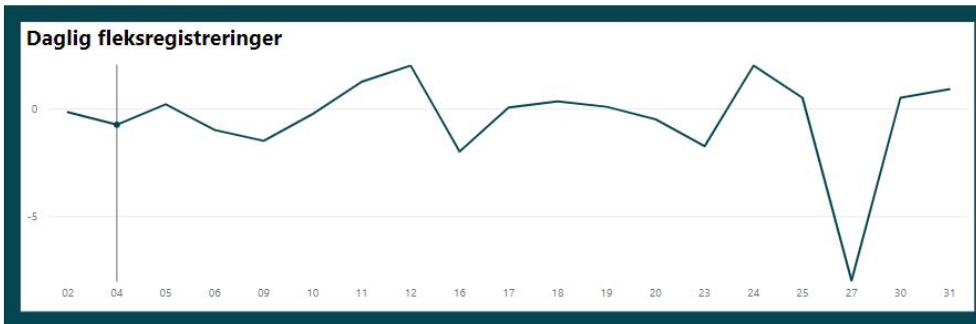
Rapporteksempel 1

År og måned

Year, Month

- 02
- 03
- 04
- 05
- 06
- 07
- 08
- 09
- 10
- 11
- 12

▼ 2023

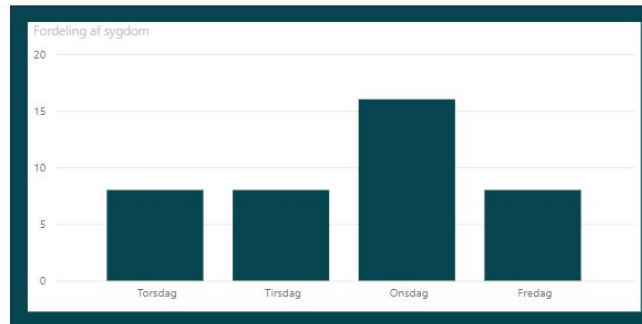


Medarbejder

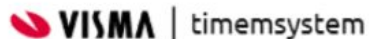
EmployeeName

- Else Thorben
- Emilia Agnete
- Evie-Grace Kirby
- Farrah Rowland
- Felix Helge
- Harriet Lang
- Hasan Mckay
- Helen Martin
- Helle Eva
- Ifan Cooper
- Jaydon Nunez

Fleks saldo (Timer)
-2,82
Samtidighedsferie (Dage)
16,72
Særlige Ferietimer (Timer)
24,80



Rapporteksempel 2

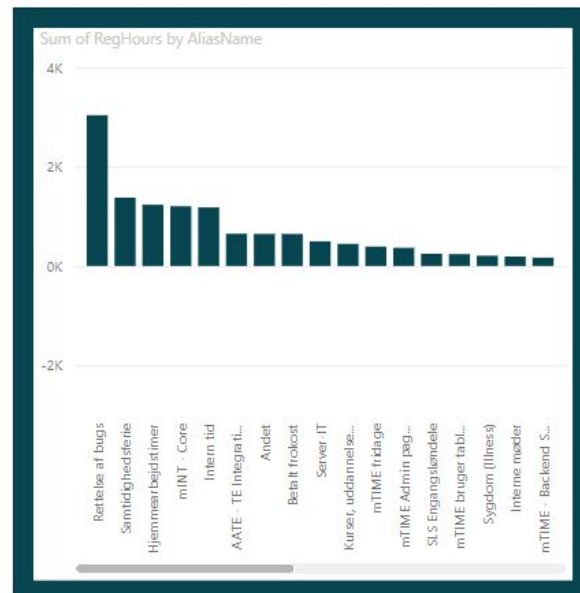
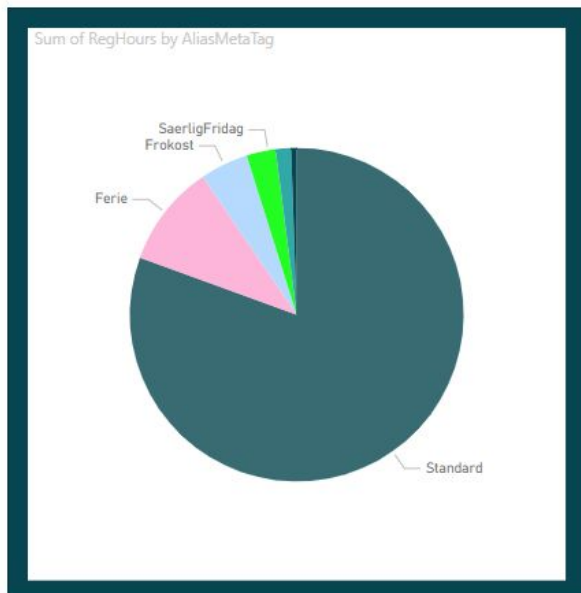


Year, Month

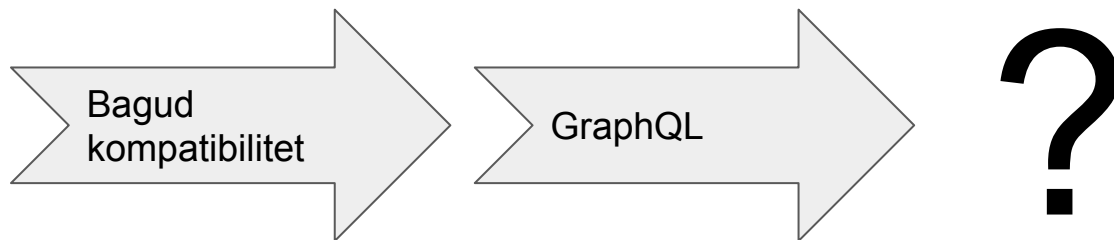
2022

UnitName

- (Blank)
- hg
- Kontor 1
- Kontor 2
- Kontor 3
- Kontor 4
- Kontor 5
- Kontor 6
- Kontor 7
- Kontor 8
- test
- TEST Af support
- Vagtgruppe
- VISMA



Roadmap



2022

2023