



The secure digital perimeter for the Citrix Workspace



- **A new security approach**
- **Key benefits**
- **Review the use-cases**





SDP story

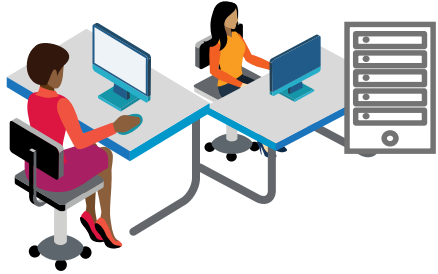
**Our
Point of
View**

security

Branch



Remote



Users

Main Office



Work is distributed

SaaS, hybrid & multi-cloud access

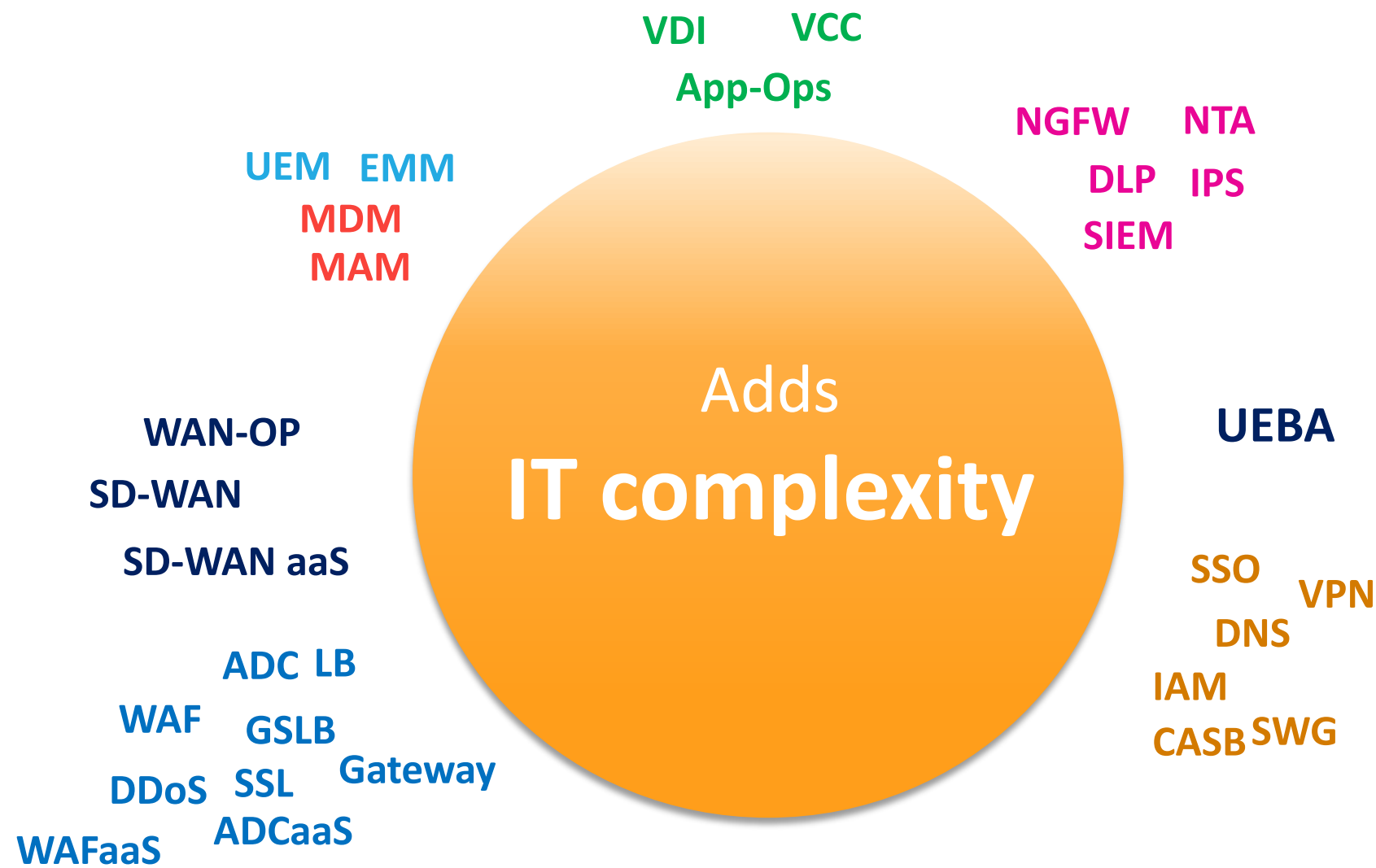


IT and
Networking
professionals

On-premises access



Many point-solutions to protect apps, data, network ...



*83% of businesses believe the
complexity of their organizational
structures and IT infrastructure is
putting their companies at even
greater risk for security breaches.*

*The Need for a New IT Security Architecture;
Citrix and Ponemon Institute; 2017*

Cyber-security is a huge business concern



Attackers with increased motivation driven by monetary value of an attack

88% of execs say they are unable to hire & retain sufficient talent to shore up the security architecture and expertise

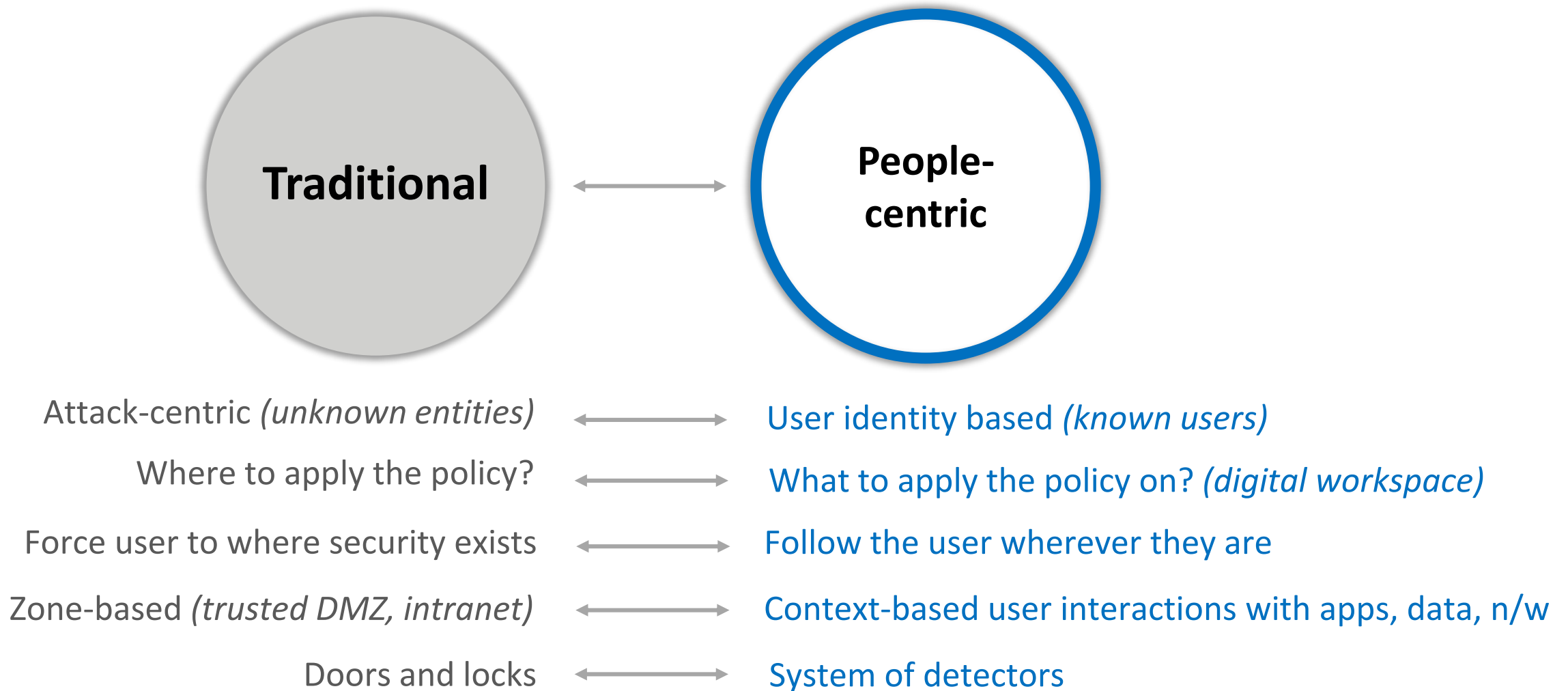
The attack surface is vast and lot more vulnerable for traditional security approaches

Three quarters of enterprises agree the **need for a new security framework** to address the threat of cyber-security.

- ✓ Cloud & app sprawl
- ✓ Distributed work-styles
- ✓ Un-sanctioned storage
- ✓ BYO and # of devices
- ✓ IT complexity
- ✓ Motivated hackers
- ✓ Vast attack surfaces
- ✓ Malicious behaviors

The Need for a New IT Security Architecture;
Citrix and Ponemon Institute; 2017

A new differentiated approach to security



Security for the digital workspace

Evolve from *attack-centric* to **dynamic**
people-centric
perimeter security

Secure Digital Perimeter



Unified
Endpoint Mgmt.

App Ops

Content Control

Security & Performance Analytics



IT/Networking

Why is SDP important?

With application sprawl, **the network** is critical to securely delivering apps, content and workspaces.

The SDP approach **significantly expands Citrix Networking offerings** in a SaaS, hybrid, multi-cloud and multi-device world

... enabling **simplified control, 360° visibility and intelligent analytics**



SDP – Trusted security for the Citrix Workspace

Simplified **control**

- On-demand *people-centric*
- Centralized policy control with distributed enforcement
- Minimize/hide attack surfaces
- Easier IT & regulatory compliance

360 **visibility**

- Aggregate logs and transaction flows
- Full visibility across SaaS, hybrid and multi-cloud

Intelligent **analytics**

- Share threat intelligence across services
- Detect and stop malicious user-behaviors
- Trigger contextual actions & policies

An abstract graphic on an orange background. On the left, a large white circle contains the word 'Benefits' in bold dark blue text. To its right is a small lime green circle. Further right is a series of four overlapping circles in shades of orange, with the word 'security' in a dark orange script font positioned over them.

Benefits

security

Citrix SDP provides ...

1. Contextual and **secure access**
2. Mobile and **device security**
3. User security and **malware protection**
4. Secure collaboration with **content security** and intellectual property (IP) protection
5. Governance, risk and **compliance**
6. Business **continuity** and app security
7. User **behavior analytics** and proactive security insights

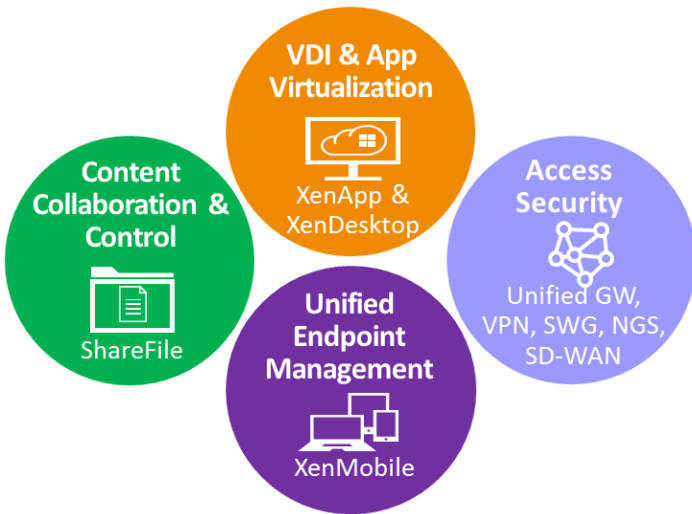


The image features a solid orange background. On the left, a large white circle contains the text "Use Cases". To its right is a smaller, solid lime green circle. Further right is a series of four overlapping circles in various shades of orange, creating a horizontal sequence. The word "security" is written in a dark brown, lowercase font across the middle of these overlapping circles.

Use Cases

security

Contextual and Secure Access



Use Cases

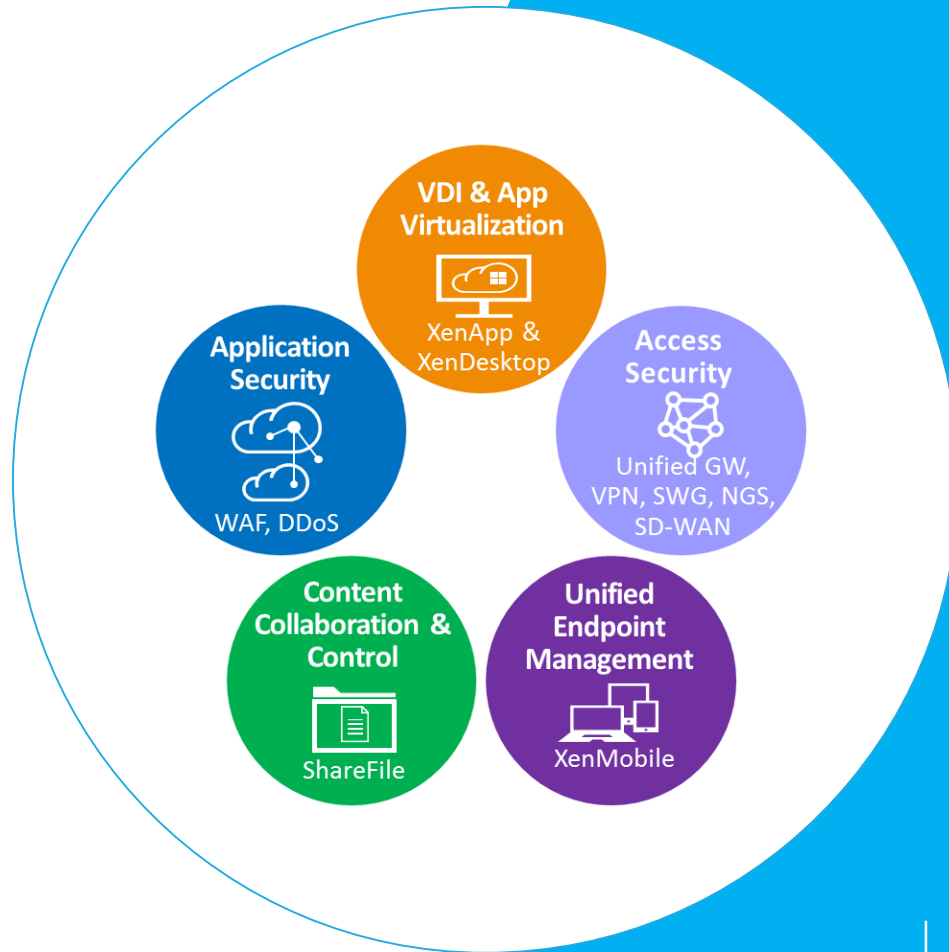
*The Citrix Identity and Access Management/IDaaS solution provides single sign-on and secure access to the secure digital workspace.

**Citrix solutions provide end-to-end security to apps deployed in datacenter, cloud, or SaaS to user accessing from branches, hospital clinics, or remote sites while using any device.

*Implement identity and access management (IAM) solution in federation with AD and AzureAD (AAD)

**Branch, campus and remote users access applications in datacenter, public Internet or cloud ... securely, from any device

Mobile and Device Security

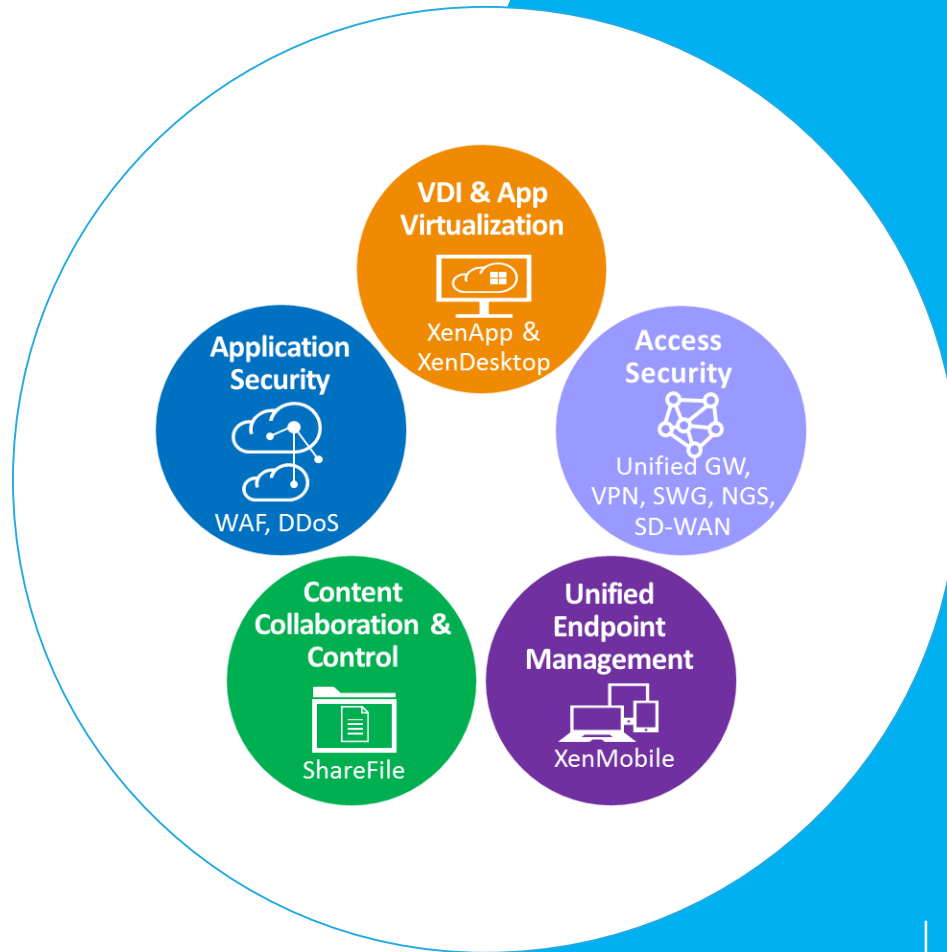


Citrix improves user productivity by delivering secure access to corporate apps from both personally owned and corporate issued devices.

Use Case

Customers looking to implement BYOD and protect application data on mobile devices

User security and malware protection

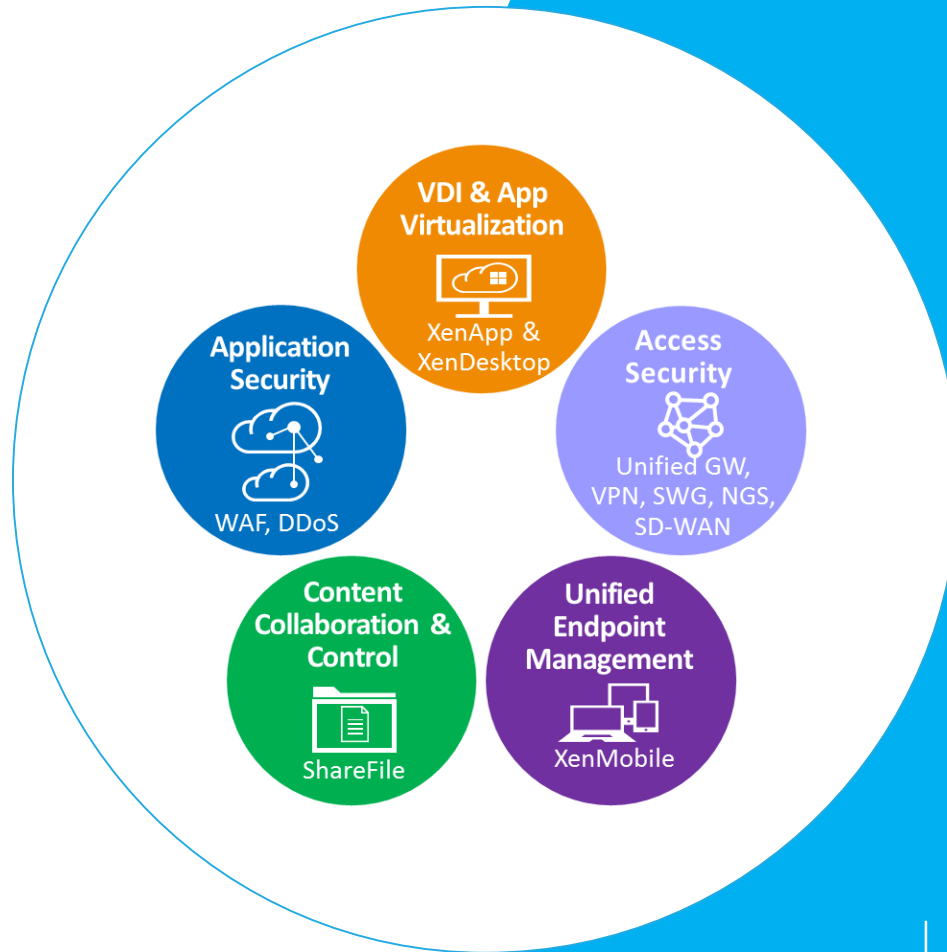


The secure digital perimeter (SDP) framework provides a differentiated and coordinated approach to protecting against malware and ransomware given the multiple touch points we can detect – endpoint (XenMobile), network path (Secure Web Gateway), content repositories (ShareFile), and applications (XenApp and XenDesktop).

Use Case

Secure the end-points and application infrastructure from malware threats and ransomware attacks

Secure Collaboration

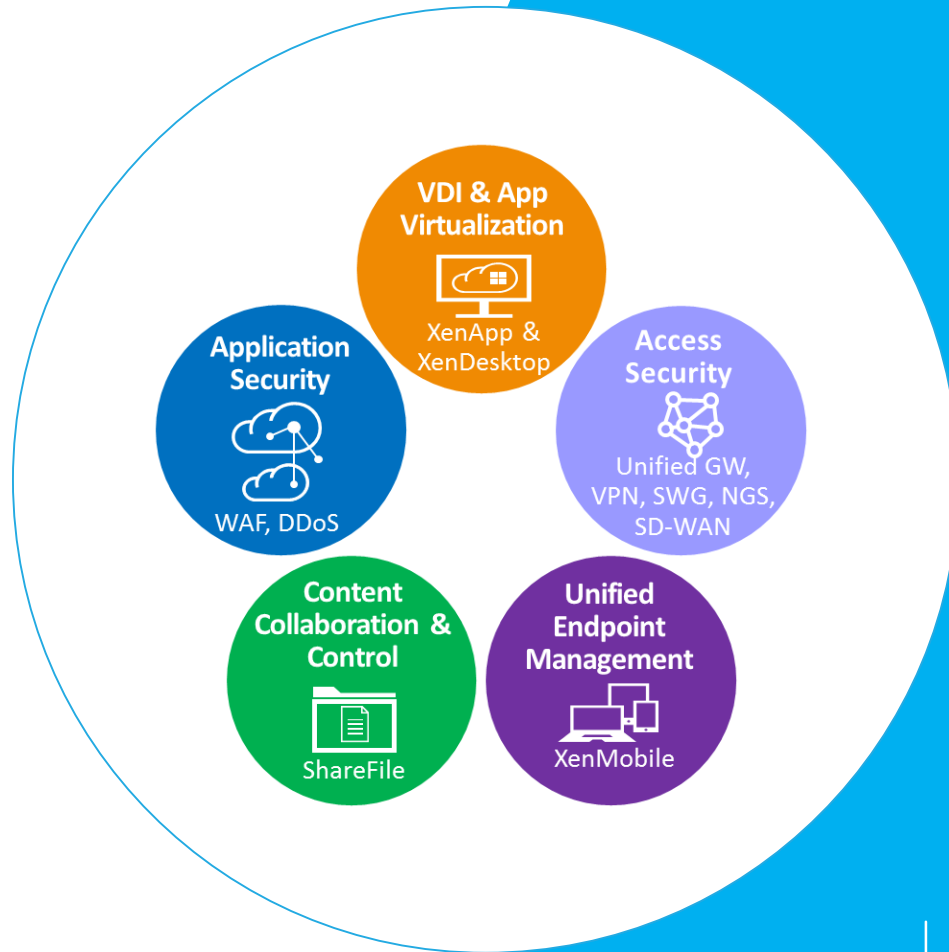


With Citrix ShareFile, the secure digital perimeter (SDP) framework offers a comprehensive solution across users and apps that supports easy access and collaboration while protecting data against theft, misuse and loss.

Use Cases

- Protect confidential information and intellectual property
- Secure collaboration and file sharing
- Use Information Rights Management (IRM)

Governance, risk and compliance

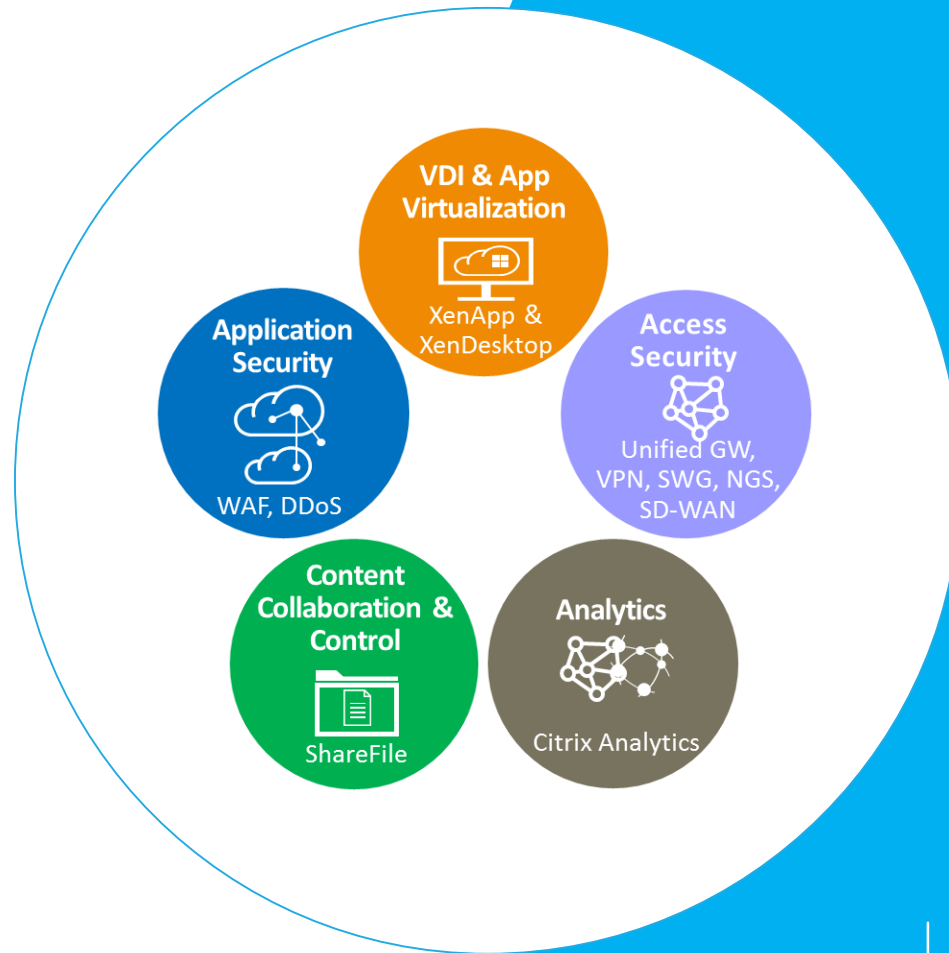


Citrix helps customers address risk, global compliance standards, and industry regulations for app, user and device security using the secure digital perimeter (SDP) framework.

Use Cases

Reduce business risks by implementing compliance standards, adopting industry regulations and adhering to internal policy governance.

Business Continuity and App Security

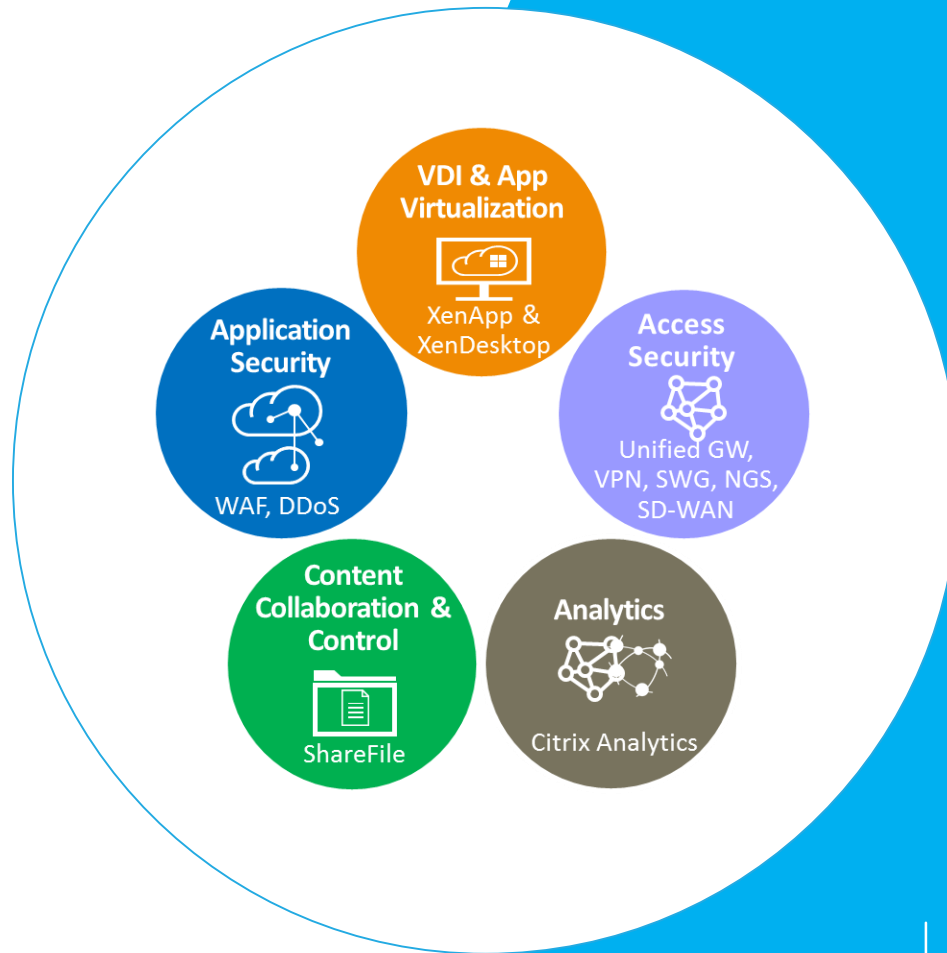


Using the secure digital perimeter (SDP) framework, Citrix provides business continuity by 1) preventing malicious attacks from affecting business operations and 2) providing network and secure access resilience during outages, natural disasters and calamities. This enables the workforce to rapidly resume essential and critical activities industries such as law enforcement, healthcare, and finance.

Use Cases

- High Availability and better performance of web and virtual applications.
- Implement a defense-in-depth (availability and security) for applications in the datacenter and cloud, and actively monitor the application infrastructure for external or internal attacks.

User behavior analytics and proactive security insights



As a key component of a secure digital perimeter (SDP), Citrix Analytics collects data across Citrix offerings, generating actionable insights that enable administrators to proactively handle user and app security threats, improve performance and support continuous operations.

Use Cases

- Protect users and endpoints from external and internal threats.
- Protecting enterprise from internal rogue and compromised users.
- Secure application infrastructure from external and internal threats.



**Simplified
Control**

**360
Visibility**

**Intelligent
Analytics**

Trusted security for the 'secure digital workspace'

- New dynamic people-centric approach to security in a SaaS, hybrid, multi-cloud and multi-device world
- Centralized policy engine with distributed enforcement
- Integrate with all Citrix products – protect existing investments
- Full visibility and security analytics to mitigate risk
- Protect app infrastructure and minimize/hide attack surfaces

