



AIR FREIGHT

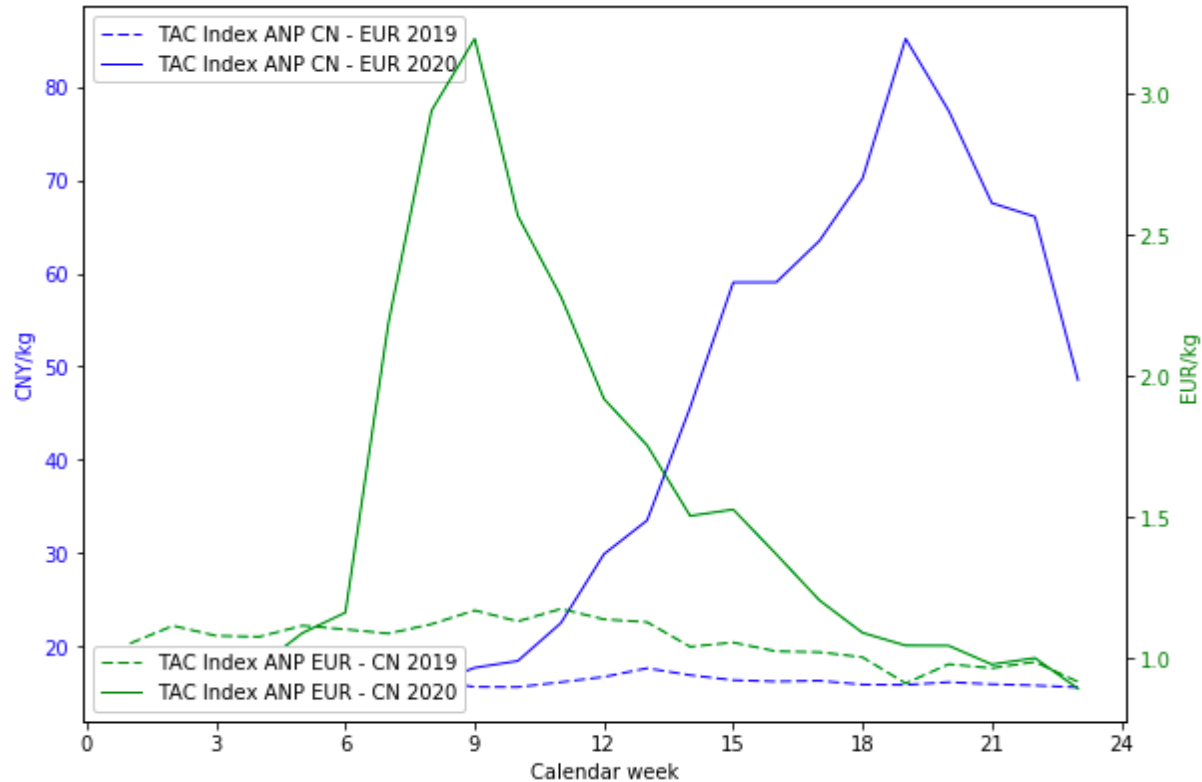
LATEST ANP PRICING DEVELOPMENT

to/from CHINA, US & HONG KONG

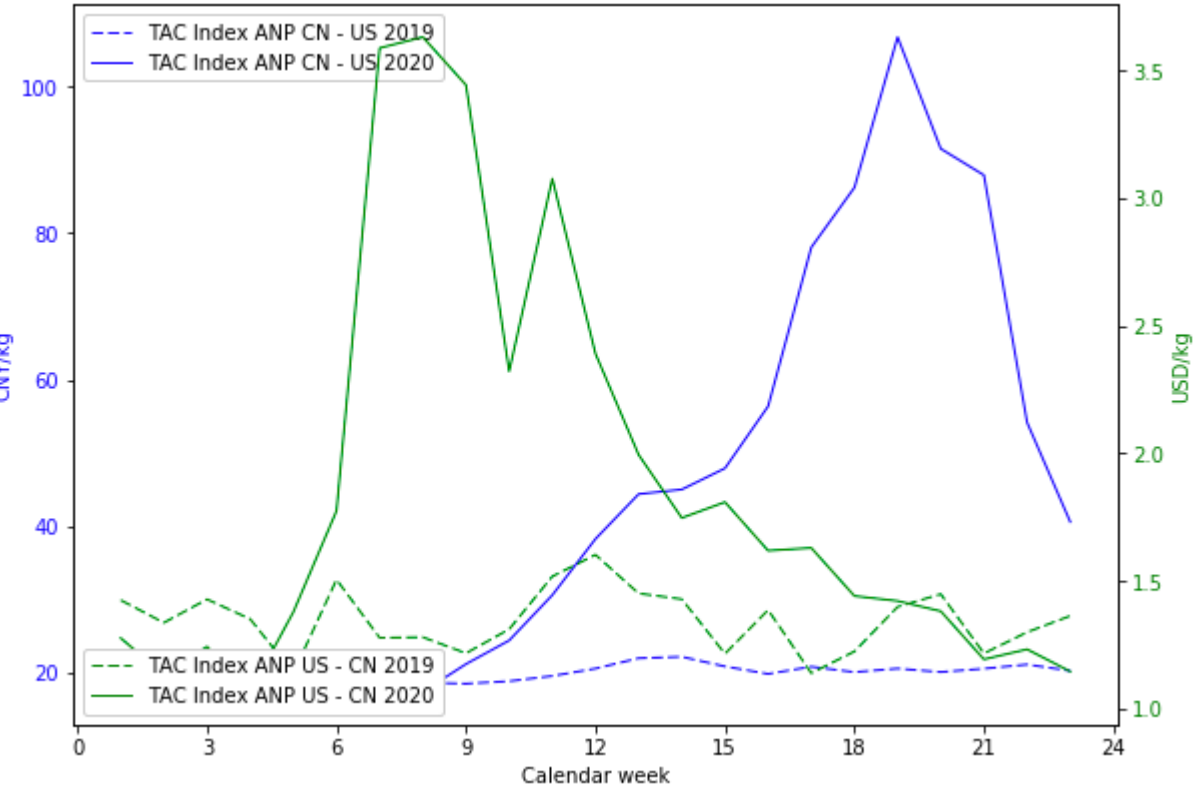
Update: 8 June 2020

PRICING DEVELOPMENTS TO/FROM CHINA

CHINA TO EUROPE COMPARISON YOY



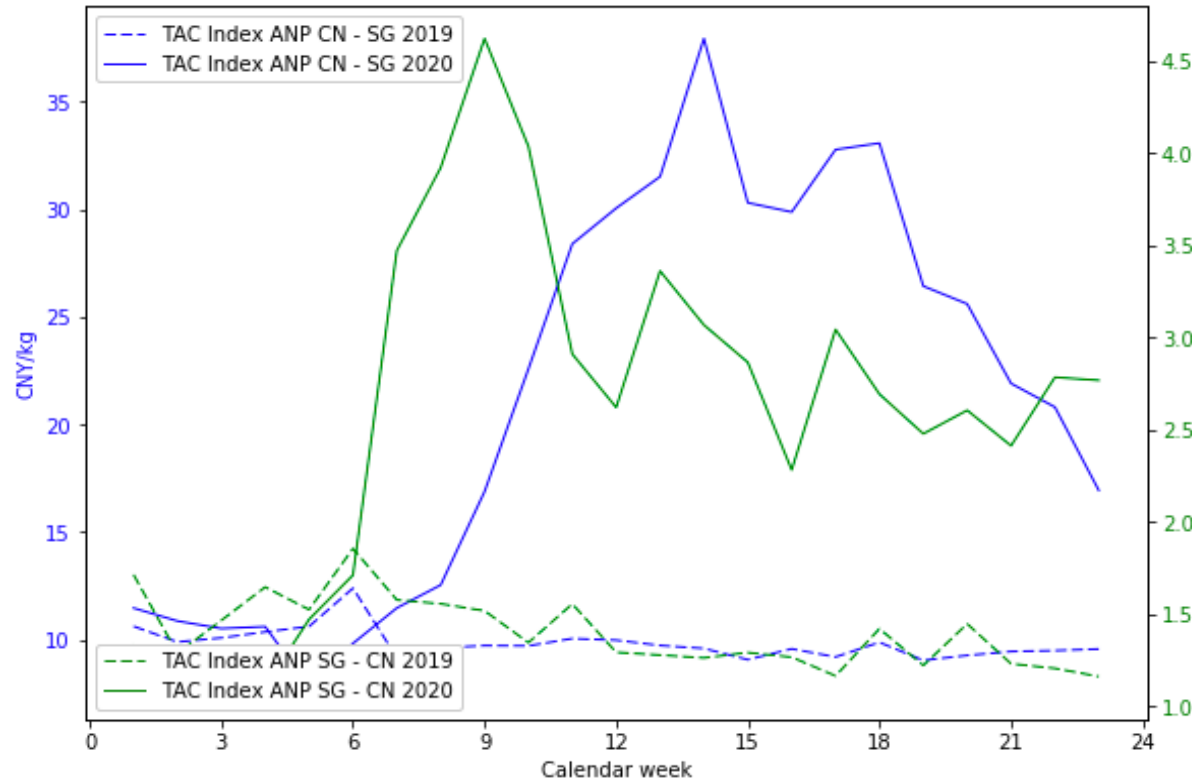
CHINA TO US DEVELOPMENT YOY



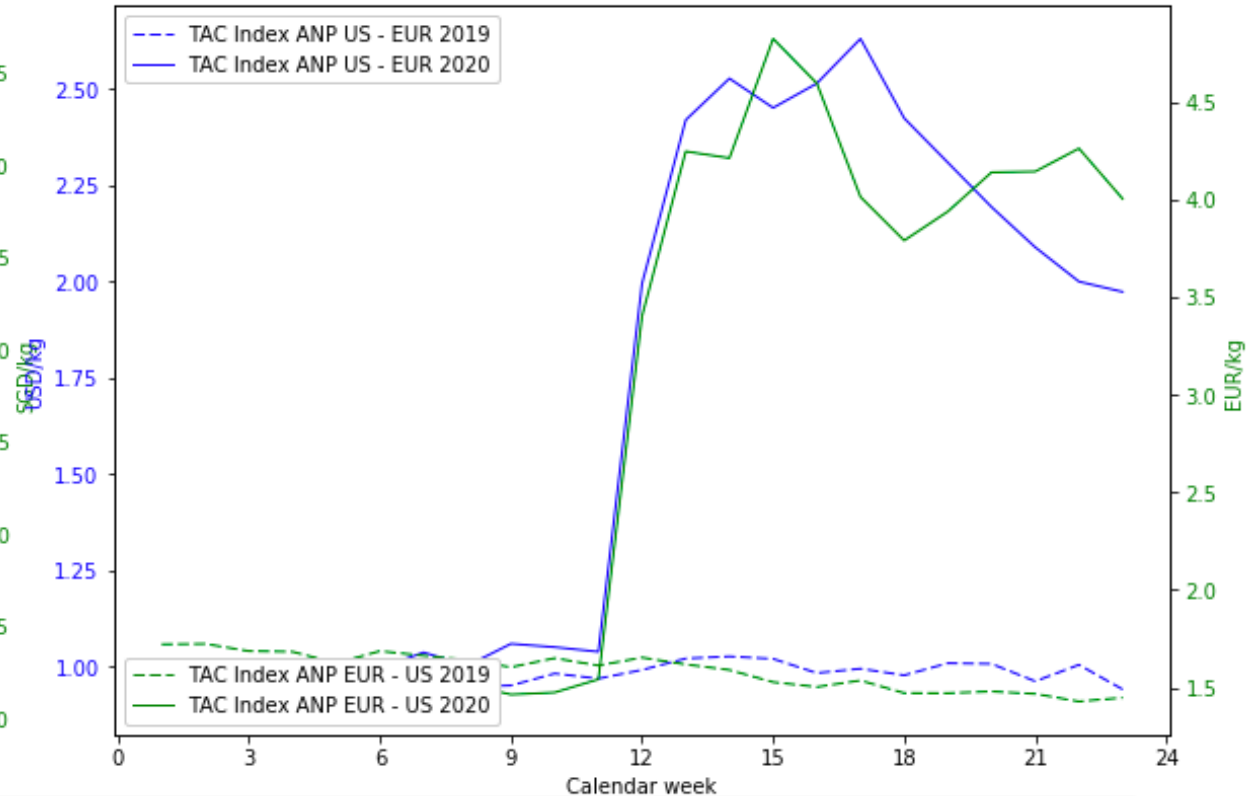
Note: The week indication is based on publishing date and refers to pricing of the previous week.

PRICING DEVELOPMENTS FROM CHINA & USA

CHINA TO SINGAPORE COMPARISON YOY



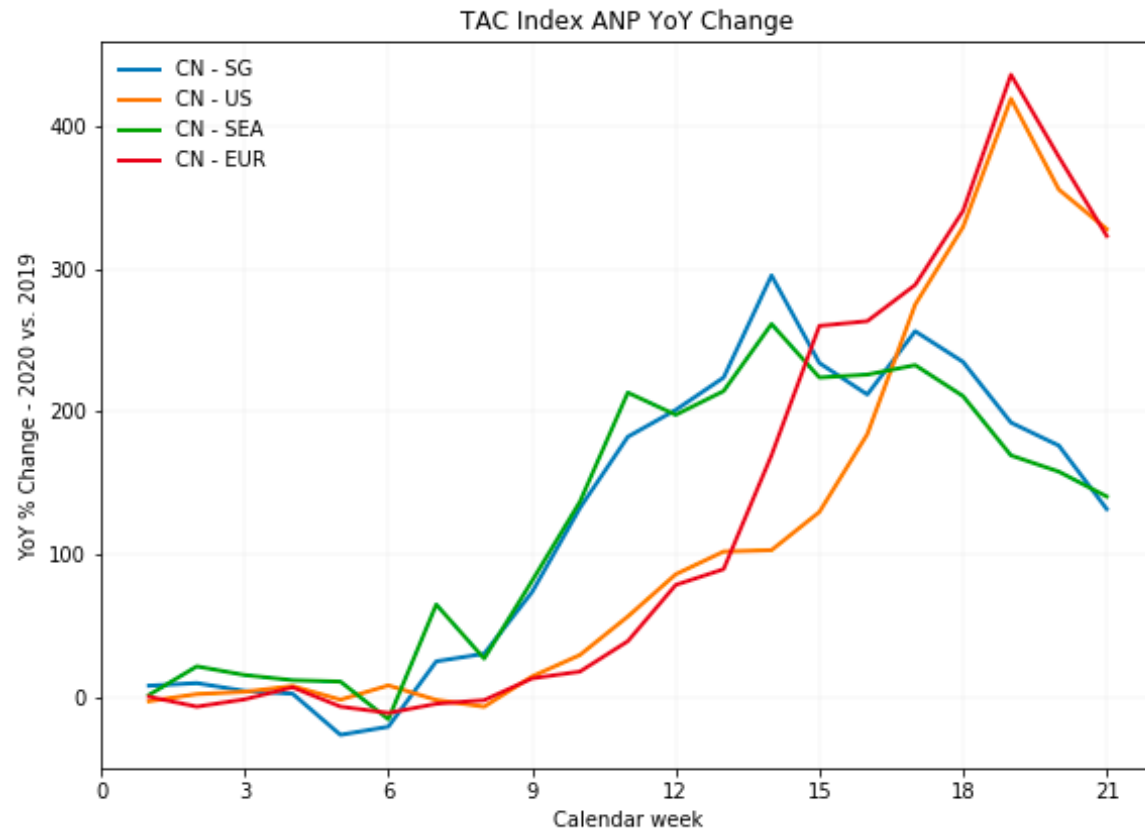
USA TO EUROPE DEVELOPMENT YOY



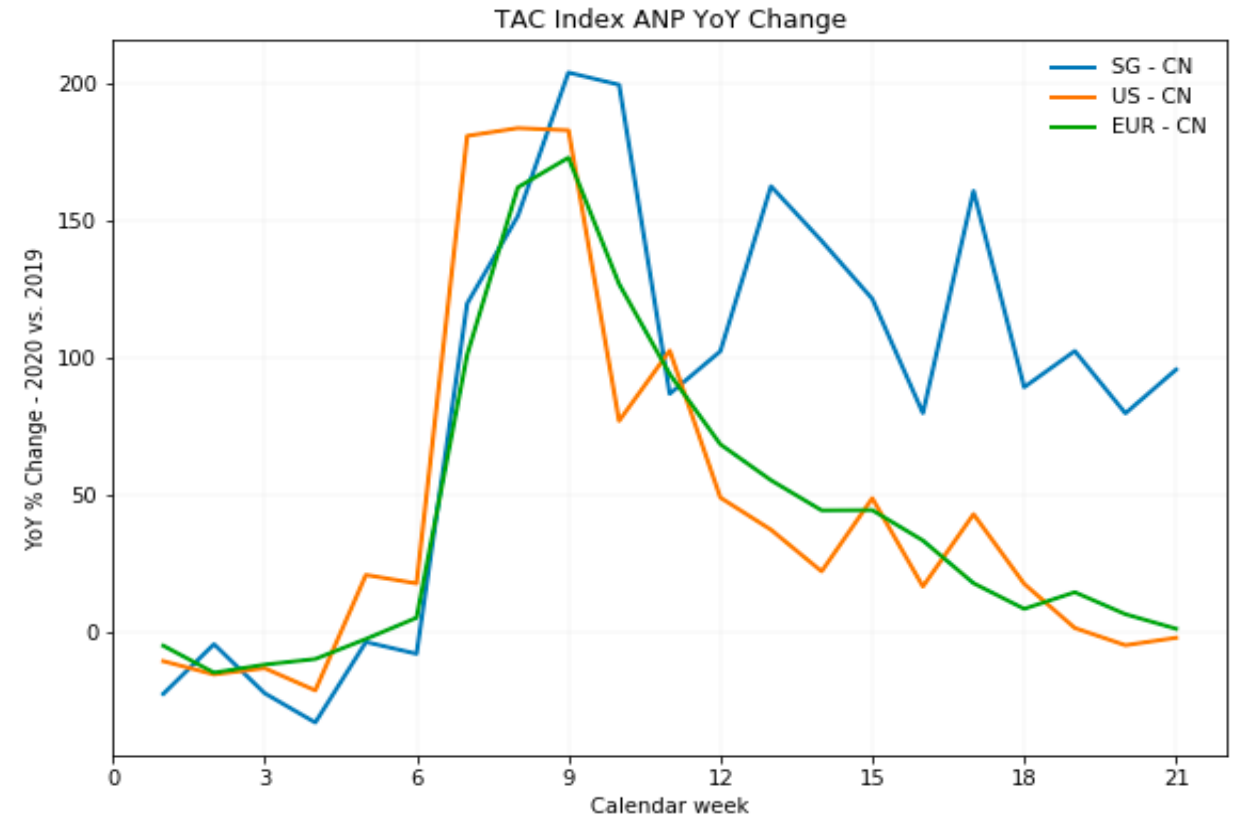
Note: The week indication is based on publishing date and refers to pricing of the previous week.
The Actual Net Pricing (ANP) is the per KG rate achieved using all-in cost and actual weight declared on the MAWB.

PRICING DEVELOPMENTS INBOUND-OUTBOUND CHINA **TAC**Index

CHINA OUTBOUND COMPARISON YOY



CHINA INBOUND COMPARISON YOY



PRICING DEVELOPMENTS HONG KONG OUTBOUND

HONG KONG OUTBOUND COMPARISON YOY

TAC Index ANP YoY Change

