



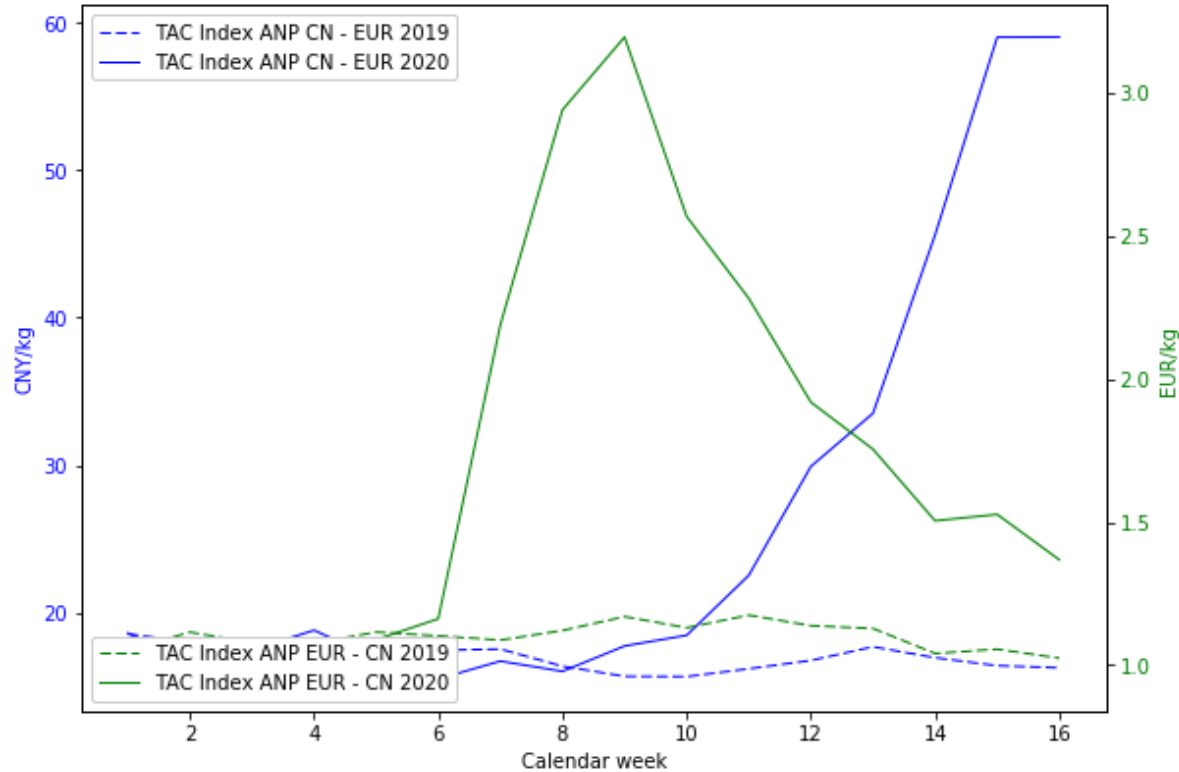
AIR FREIGHT LATEST ANP PRICING DEVELOPMENT

to/from CHINA, HONG KONG & US

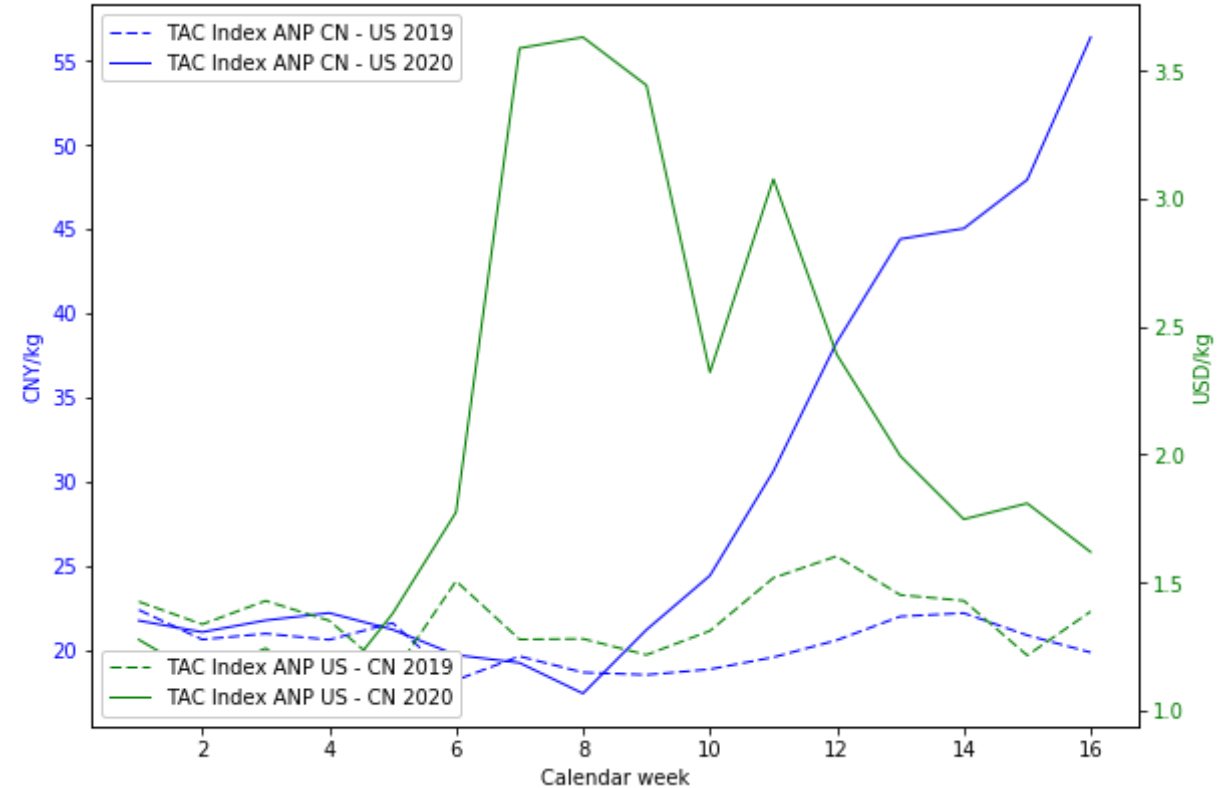
Update: 20 April 2020

PRICING DEVELOPMENTS TO/FROM CHINA

CHINA TO EUROPE COMPARISON YOY



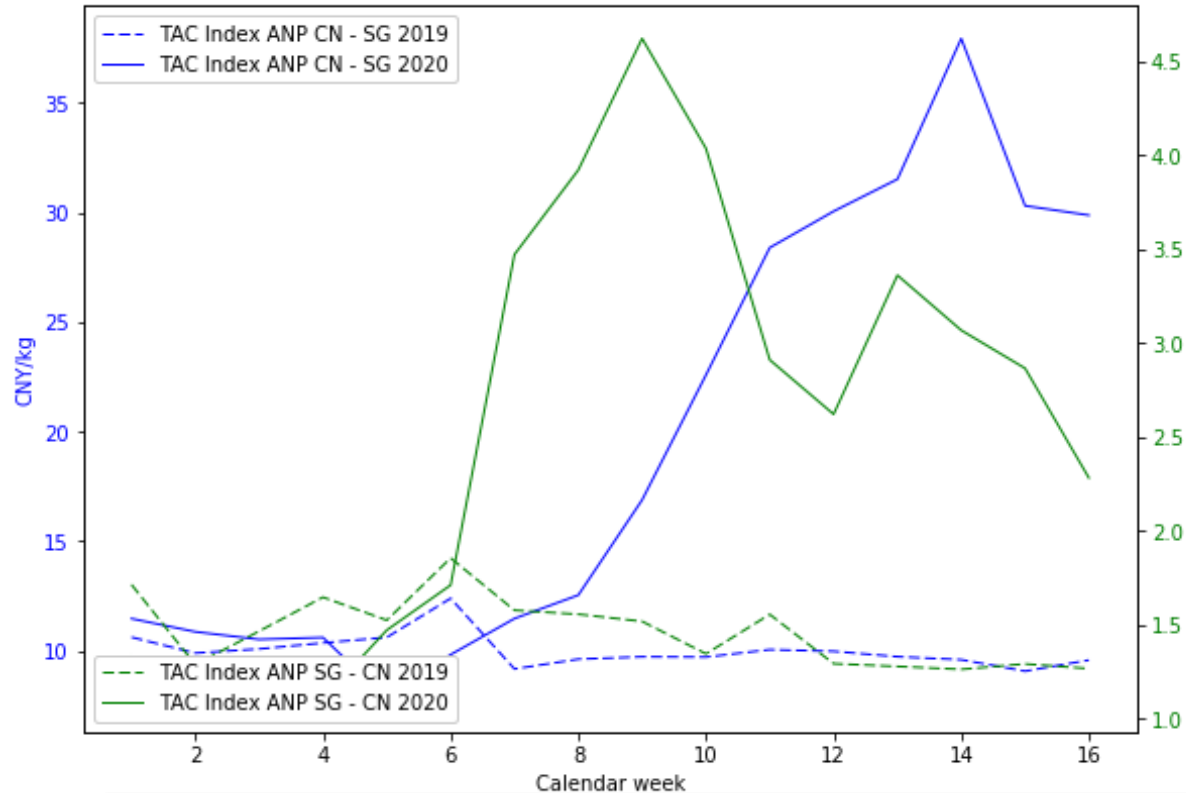
CHINA TO US DEVELOPMENT YOY



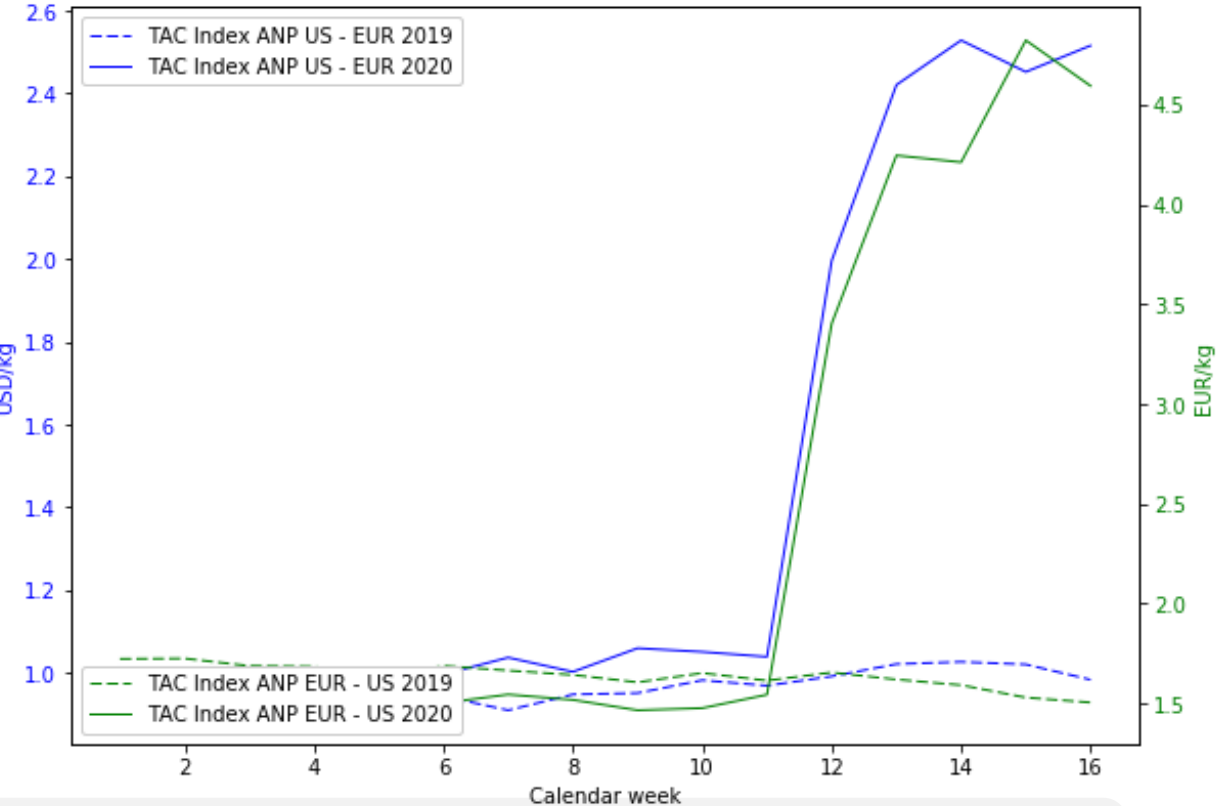
Note: The week indication is based on publishing date and refers to pricing of the previous week.

PRICING DEVELOPMENTS FROM CHINA & USA

CHINA TO SINGAPORE COMPARISON YOY



USA TO EUROPE DEVELOPMENT YOY

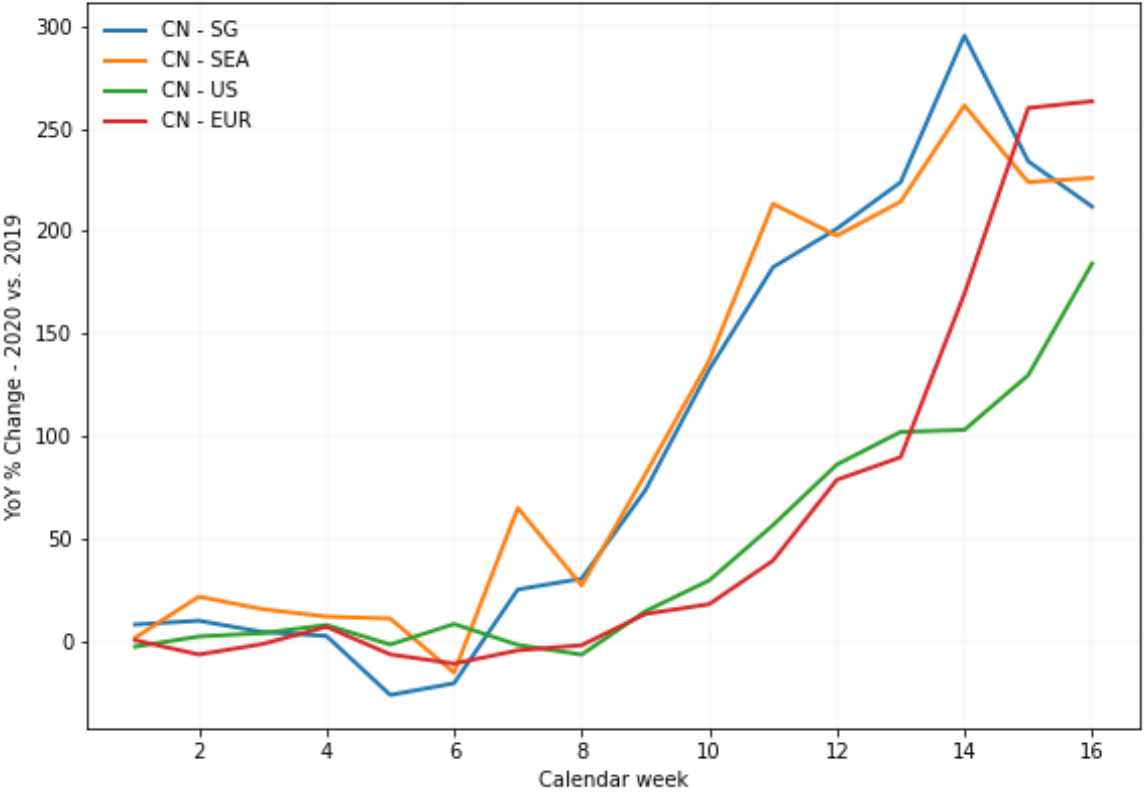


Note: The week indication is based on publishing date and refers to pricing of the previous week.
The Actual Net Pricing (ANP) is the per KG rate achieved using all-in cost and actual weight declared on the MAWB.

PRICING DEVELOPMENTS INBOUND-OUTBOUND CHINA **TAC**Index

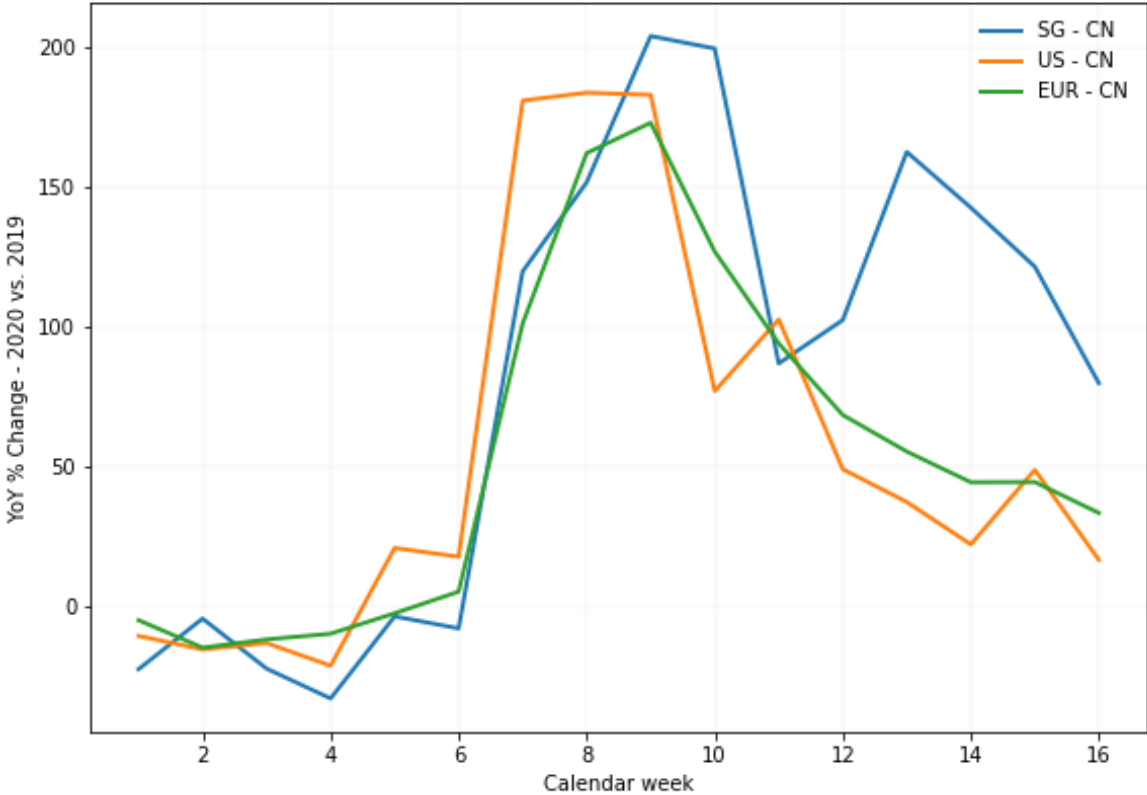
CHINA OUTBOUND COMPARISON YOY

TAC Index ANP YoY Change



CHINA INBOUND COMPARISON YOY

TAC Index ANP YoY Change



PRICING DEVELOPMENTS HONG KONG OUTBOUND

HONG KONG OUTBOUND COMPARISON YOY

